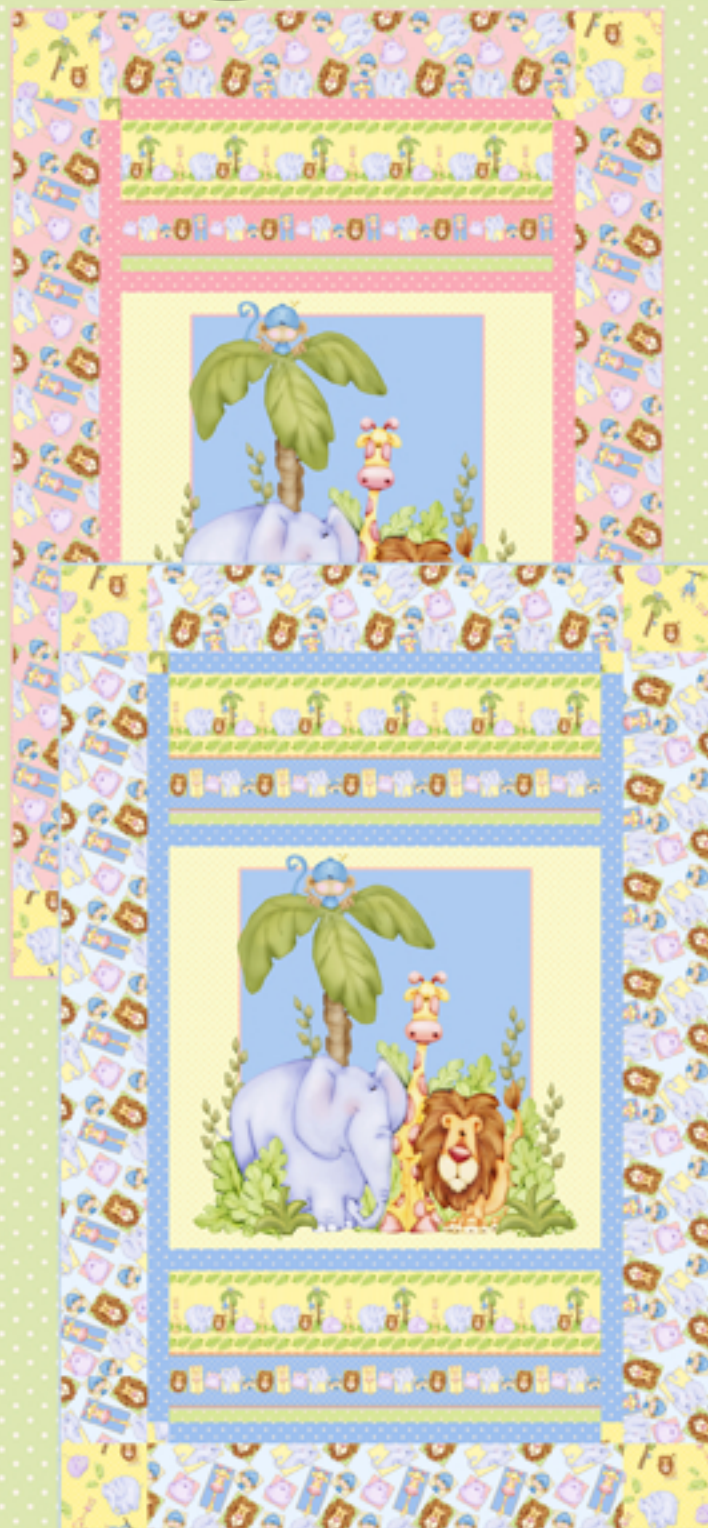


Mighty Jungle



Finished Crib Quilt Size: 52" x 62"

A Free Pattern Featuring Fabrics Designed by
Shelly Comiskey



Finished Youth Bed Quilt Size: 45" x 67"

49 West 37th Street, New York, NY 10018

tel: 212-686-5194 fax: 212-532-3525

Toll Free: 800-294-9495

www.henryglassfabrics.com

Simply Shelly
design and illustration



Henry Glass & Co., Inc

facebook

Mighty Jungle

Fabrics in the Collection



5723-11
Blue Printed Panel



5723-22
Pink Printed Panel



5724-11
Blue Printed Stripe



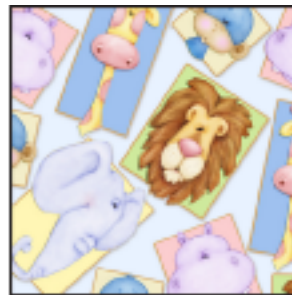
5724-22
Pink Printed Stripe



5725-11
Blue Animals



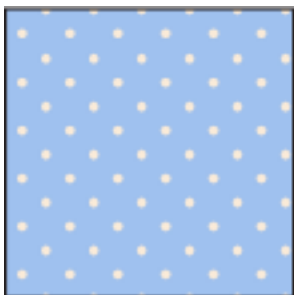
5725-44
Yellow Animals



5726-11
Blue Animal Portraits



5726-22
Pink Animal Portraits



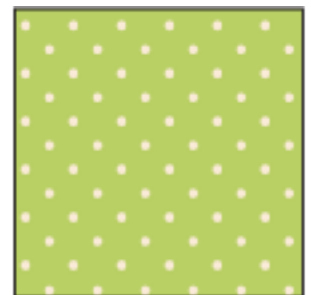
5727-11
Blue Dot



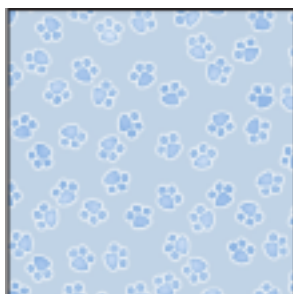
5727-22
Pink Dot



5727-44
Yellow Dot



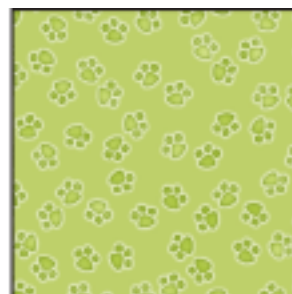
5727-66
Green Dot



5728-11
Blue Paw Print



5728-22
Pink Paw Print



5728-66
Green Paw Print

Mighty Jungle

Crib Quilt

Blue Version

Materials

1 yard	Blue Panel Print (one full panel)	(5723-11)
1 ½ yards	Blue Printed Stripe	(5724-11)
⅝ yard	Blue Animal Print	(5725-11)
⅝ yard	Blue Dot (includes binding)	(5727-11)
½ yard	Yellow Dot	(5727-44)
¼ yard	Green Dot	(5727-66)
⅜ yard	Blue Paw Print	(5728-11)
3 ⅝ yards	Blue Animal Portraits (for quilt backing)	(5726-11)

Cutting Instructions

Please note: except for the printed stripe, all strips are cut across the width of the fabric from selvage edge to selvage edge.

From the printed panel, cut:

- (1) piece 30 ½" wide x 40 ½" high with the printed motifs centered vertically and horizontally.

From the blue printed stripe, cut:

- (4) *lengthwise* strips, 6 ½" wide x *length* of fabric with the yellow background stripe centered in each strip.

From the blue animal print, cut:

- (4) 3 ½" strips.

From the blue dot, cut:

- (6) 2 ½" strips for the binding.

From the yellow dot, cut:

- (4) 2 ½" strips. Recut into (2) 40 ½" and (2) 30 ½" strips.

From the green dot, cut:

- (1) 3 ½" strip. Recut into (4) 3 ½" x 3 ½" squares and (4) 2 ½" x 2 ½" squares.

From the blue paw print, cut:

- (1) 6 ½" strip. Recut into (4) 6 ½" x 6 ½" squares.

Sewing Instructions

All seams are sewn using 1/4" seam allowance with pieces held right sides together and raw edges even.

1. Stitch the 40 ½" yellow dot strips to the left and right sides of the panel. Stich 2 ½" green dot squares to each end of both 30 ½" yellow dot strips. Sew the pieced borders to the top and bottom of the panel.
2. Trim the selvages from the 3 ½" blue animal print strips and sew the strips end to end to make a long 3 ½" strip. From this long strip, cut (2) 44 ½" and (2) 34 ½" lengths. Sew the longer pieces to the left and right sides of the quilt top. Sew 3 ½" green dot squares to each end of both 34 ½" blue animal print strips. Stitch these pieced borders to the top and bottom. To prevent stretching, stitch 1/8" in all the way around the outer edge of the quilt top.
3. Trim (2) of the printed stripe strips to 50 ½" and (2) to 40 ½" (if your measurements are different, cut to fit your quilt top). Stitch the longer pieces to the left and right sides of the quilt top. Sew 6 ½" blue paw print squares to each end of the shorter strips. Stitch these pieced borders to the top and bottom.
4. Layer the completed quilt top with batting and backing and quilt as desired.
5. Bind using the 2 ½" blue dot strips.

Pink Version

Materials

1 yard	Pink Panel Print (one full panel)	(5723-22)
1 ½ yards	Pink Printed Stripe	(5724-22)
⅝ yard	Pink Animal Portraits	(5726-22)
⅝ yard	PinkDot (includes binding)	(5727-22)
½ yard	Yellow Dot	(5727-44)
¼ yard	Green Dot	(5727-66)
⅜ yard	Pink Paw Print	(5728-22)
3 ⅝ yards	Pink Animal Portraits (for quilt backing)	(5726-22)

Cutting Instructions

Please note: except for the printed stripe, all strips are cut across the width of the fabric from selvage edge to selvage edge.

From the printed panel, cut:

- (1) piece 30 ½" wide x 40 ½" high with the printed motifs centered vertically and horizontally.

From the pink printed stripe, cut:

- (4) *lengthwise* strips, 6 ½" wide x *length* of fabric with the yellow background stripe centered in each strip.

From the pink animal portraits, cut:

- (4) 3 ½" strips.

From the pink dot, cut:

- (6) 2 ½" strips for the binding.

From the yellow dot, cut:

- (4) 2 ½" strips. Recut into (2) 40 ½" and (2) 30 ½" strips.

From the green dot, cut:

- (1) 3 ½" strip. Recut into (4) 3 ½" x 3 ½" squares and (4) 2 ½" x 2 ½" squares.

From the pink paw print, cut:

- (1) 6 ½" strip. Recut into (4) 6 ½" x 6 ½" squares.

Sewing Instructions

All seams are sewn using 1/4" seam allowance with pieces held right sides together and raw edges even.

1. Stitch the 40 ½" yellow dot strips to the left and right sides of the panel. Stich 2 ½" green dot squares to each end of both 30 ½" yellow dot strips. Sew the pieced borders to the top and bottom of the panel.
2. Trim the selvages from the 3 ½" pink animal portraits strips and sew the strips end to end to make a long 3 ½" strip. From this long strip, cut (2) 44 ½" and (2) 34 ½" lengths. Sew the longer pieces to the left and right sides of the quilt top. Sew 3 ½" green dot squares to each end of both 34 ½" pink animal portraits strips. Stitch these pieced borders to the top and bottom. To prevent stretching, stitch 1/8" in all the way around the outer edge of the quilt top.
3. Trim (2) of the printed stripe strips to 50 ½" and (2) to 40 ½" (if your measurements are different, cut to fit your quilt top). Stitch the longer pieces to the left and right sides of the quilt top. Sew 6 ½" pink paw print squares to each end of the shorter strips. Stitch these pieced borders to the top and bottom.
4. Layer the completed quilt top with batting and backing and quilt as desired.
5. Bind using the 2 ½" pink dot strips. ©2011 Henry Glass & Co.

Mighty Jungle

Blue Version

Materials

1 yard	Blue Panel Print (one full panel)	(5723-11)
1 yard	Blue Printed Stripe	(5724-11)
$\frac{3}{8}$ yard	Yellow Animal Print	(5725-44)
1 $\frac{1}{8}$ yards	Blue Animal Portraits	(5726-11)
$\frac{1}{2}$ yard	Blue Dot	(5727-11)
$\frac{5}{8}$ yard	Blue Paw Print (includes binding)	(5728-11)
3 $\frac{1}{4}$ yards	Blue Animal Portraits (for quilt backing)	(5726-11)

Cutting Instructions

Please note: except for the printed stripe, all strips are cut across the width of the fabric from selvage edge to selvage edge.

From the printed panel, cut:

- (1) piece 30 $\frac{1}{2}$ " wide x 28 $\frac{1}{2}$ " high with the large center square centered vertically and horizontally.

From the blue printed stripe, cut:

- (2) *lengthwise* strips, 11 $\frac{1}{2}$ " wide x *length* of fabric with the printed motifs centered in each strip as shown in the quilt pictured on the cover.

From the yellow animal print, cut:

- (1) 6 $\frac{1}{2}$ " strip. Recut into (4) 6 $\frac{1}{2}$ " x 6 $\frac{1}{2}$ " squares and (4) 2" x 2" squares.

From the blue animal portraits, cut:

- (5) 6 $\frac{1}{2}$ " strips for the outer border.

From the blue dot, cut:

- (7) 2" strips.

From the blue paw print, cut:

- (6) 2 $\frac{1}{2}$ " strips for the binding.

Sewing Instructions

All seams are sewn using 1/4" seam allowance with pieces held right sides together and raw edges even.

1. Trim (4) 2" blue dot strips to 30 $\frac{1}{2}$ ". Stitch a trimmed strip to the top and bottom of the printed panel.
2. Stitch printed stripe strips to the top and bottom of the quilt top as shown in the quilt pictured on the cover. Trim both printed stripe strips even with the quilt top.
3. Trim the selvages from the (3) remaining 2" blue dot strips and sew the strips together end to end to make a long 2" strip. Cut (2) 52 $\frac{1}{2}$ " lengths from this strip (*if your measurements are different, cut to fit your quilt top*). Stitch these strips to the left and right sides of the quilt top. Sew 2" yellow animal print squares to each end of the (2) remaining 30 $\frac{1}{2}$ " blue dot strips. Stitch these pieced borders to the top and bottom of the quilt top.
4. Trim the selvages from (5) 6 $\frac{1}{2}$ " blue animal portraits strips and sew the strips together end to end to make a long 6 $\frac{1}{2}$ " strip. Cut (2) 55 $\frac{1}{2}$ " and (2) 30 $\frac{1}{2}$ " lengths from this strip (*if your measurements are different, cut to fit your quilt top*). Stitch the longer strips to the left and right sides of the quilt top. Sew 6 $\frac{1}{2}$ " yellow animal print squares to each end of each shorter strip. Stitch these pieced borders to the top and bottom of the quilt top.
5. Layer the completed quilt top with batting and backing and quilt as desired.
6. Bind using the 2 $\frac{1}{2}$ " blue paw print strips.

Youth Bed Quilt

Pink Version

Materials

1 yard	Pink Panel Print (one full panel)	(5723-22)
1 yard	Pink Printed Stripe	(5724-22)
$\frac{3}{8}$ yard	Yellow Animal Print	(5725-44)
1 $\frac{1}{8}$ yards	Pink Animal Portraits	(5726-22)
$\frac{1}{2}$ yard	Pink Dot	(5727-22)
$\frac{5}{8}$ yard	Pink Paw Print (includes binding)	(5728-22)
3 $\frac{1}{4}$ yards	Pink Animal Portraits (for quilt backing)	(5726-22)

Cutting Instructions

Please note: except for the printed stripe, all strips are cut across the width of the fabric from selvage edge to selvage edge.

From the printed panel, cut:

- (1) piece 30 $\frac{1}{2}$ " wide x 28 $\frac{1}{2}$ " high with the large center square centered vertically and horizontally.

From the pink printed stripe, cut:

- (2) *lengthwise* strips, 11 $\frac{1}{2}$ " wide x *length* of fabric with the printed motifs centered in each strip as shown in the quilt pictured on the cover.

From the yellow animal print, cut:

- (1) 6 $\frac{1}{2}$ " strip. Recut into (4) 6 $\frac{1}{2}$ " x 6 $\frac{1}{2}$ " squares and (4) 2" x 2" squares.

From the pink animal portraits, cut:

- (5) 6 $\frac{1}{2}$ " strips for the outer border.

From the pink dot, cut:

- (7) 2" strips.

From the pink paw print, cut:

- (6) 2 $\frac{1}{2}$ " strips for the binding.

Sewing Instructions

All seams are sewn using 1/4" seam allowance with pieces held right sides together and raw edges even.

1. Trim (4) 2" pink dot strips to 30 $\frac{1}{2}$ ". Stitch a trimmed strip to the top and bottom of the printed panel.
2. Stitch printed stripe strips to the top and bottom of the quilt top as shown in the quilt pictured on the cover. Trim both printed stripe strips even with the quilt top.
3. Trim the selvages from the (3) remaining 2" pink dot strips and sew the strips together end to end to make a long 2" strip. Cut (2) 52 $\frac{1}{2}$ " lengths from this strip (*if your measurements are different, cut to fit your quilt top*). Stitch these strips to the left and right sides of the quilt top. Sew 2" yellow animal print squares to each end of the (2) remaining 30 $\frac{1}{2}$ " pink dot strips. Stitch these pieced borders to the top and bottom of the quilt top.
4. Trim the selvages from (5) 6 $\frac{1}{2}$ " pink animal portraits strips and sew the strips together end to end to make a long 6 $\frac{1}{2}$ " strip. Cut (2) 55 $\frac{1}{2}$ " and (2) 30 $\frac{1}{2}$ " lengths from this strip (*if your measurements are different, cut to fit your quilt top*). Stitch the longer strips to the left and right sides of the quilt top. Sew 6 $\frac{1}{2}$ " yellow animal print squares to each end of each shorter strip. Stitch these pieced borders to the top and bottom of the quilt top.
5. Layer the completed quilt top with batting and backing and quilt as desired.
6. Bind using the 2 $\frac{1}{2}$ " pink paw print strips.