

Daisy Dance

By Kari Ramsay



Approximately 63" x 75"



Henry Glass & Co., Inc.



49 West 37th Street
New York, NY 10018
tel: 212-686-5194 fax: 212-532-3525
Toll free: 1-800-294-9495
www.henryglassfabrics.com

To view the entire collection and download a free pattern, please visit our website at www.henryglassfabrics.com



Daisy Dance

By Kari Ramsay



Fresh Cut Quilts
<http://www.freshcutquilts.com/>
<http://www.freshcutquilts.blogspot.com/>

Pink/Red Quilt

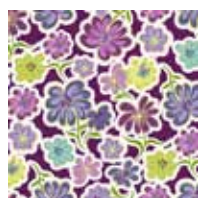
Approximately 63" x 75"

7530/88 Red Focus Fabric	2 yards (outer border, blocks)
7531/66 Green Feedsack	$\frac{3}{8}$ yd (inner border)
7531/88 Red Feedsack	$\frac{1}{2}$ yd (blocks)
7532/88 Red Daisy	$\frac{7}{8}$ yd (blocks)
7533/88 Red Grid Dot	1 fat quarter (cornerstones)
7534/22 Pink Petal	2 yards (blocks, binding)
7535/88 Red Swirl Dot	$\frac{1}{2}$ yd (blocks)
7535/66 Green Swirl Dot	2 yards (background)
Backing	4 yards

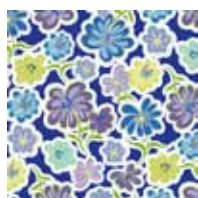
Blue/Purple Quilt

Approximately 63" x 75"

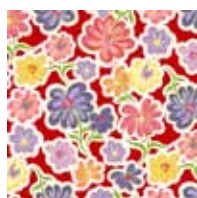
7530/55 Purple Focus Fabric	1 $\frac{1}{2}$ yards (outer border)
7530/77 Blue Focus Fabric	1 fat quarter (blocks)
7531/55 Purple Feedsack	1 fat quarter (blocks)
7531/66 Green Feedsack	$\frac{5}{8}$ yd (inner border)
7532/55 Purple Daisy	1 fat quarter (blocks)
7532/77 Blue Daisy	$\frac{7}{8}$ yd (blocks)
7533/77 Blue Grid Dot	1 fat quarter (cornerstones)
7533/55 Purple Grid Dot	1 fat quarter (blocks)
7534/11 Blue Petal	1 $\frac{1}{3}$ yd (blocks)
7534/55 Lavender Petal	$\frac{5}{8}$ yd (binding)
7535/11 Blue Swirl Dot	$\frac{1}{2}$ yd (blocks)
7535/66 Green Swirl Dot	2 yards (background)
Backing	4 yards



7530/55



7530/77



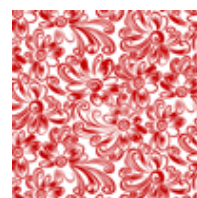
7530/88



7531/55



7531/66



7531/88



7532/55



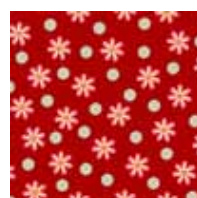
7532/77



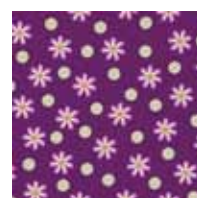
7532/88



7533/77



7533/88



7533/55



7534/11



7534/22



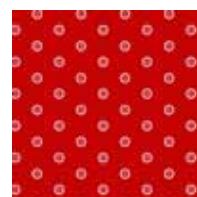
7534/55



7535/11



7535/66



7535/88



Henry Glass & Co., Inc.



Daisy Dance

By Kari Ramsay of Fresh Cut Quilts
Approximately 63" x 75"

wof=width of fabric
Seam allowance is 1/4"

Fabric Requirements Pink/Red Quilt

7530/88 Red Focus Fabric	2 yards (outer border, blocks)
7531/66 Green Feedsack	5/8 yd (inner border)
7531/88 Red Feedsack	1/2 yd (blocks)
7532/88 Red Daisy	7/8 yd (blocks)
7533/88 Red Grid Dot	1 fat quarter (cornerstones)
7534/22 Pink Petal	2 yards (blocks, binding)
7535/88 Red Swirl Dot	1/2 yd (blocks)
7535/66 Green Swirl Dot	2 yards (background)
Backing	4 yards

Cutting Requirements Pink/Red Quilt

Pink Petal 7534/22

(11) 3 1/2" x wof strips, crosscut into:

(120) 3 1/2" squares for flying geese

(8) 2 1/2" x wof strips, pieced together end to end for binding

Red Feedsack 7531/88

(2) 6 1/2" x wof strips, crosscut into:

(20) 3 1/2" x 6 1/2" rectangles for flying geese

Red Swirl Dot 7535/88

(2) 6 1/2" x wof strips, crosscut into:

(20) 3 1/2" x 6 1/2" rectangles for flying geese

Red Focus Fabric 7530/88

(2) 6 1/2" x wof strips, crosscut into:

(20) 3 1/2" x 6 1/2" rectangles for flying geese

(7) 6" x wof strips, piece together end to end and cut:

(2) 6" x 65" strips for side outer borders

(2) 6" x 64" strips for top and bottom outer borders

Red Daisy 7532/88

(3) 5 1/2" x wof strips, crosscut into

(20) 5 1/2" squares, cut once on the diagonal for blocks

Green Swirl Dot 7535/66

(4) 7 1/2" x wof strips, crosscut into:

(20) 7 1/2" squares, cut once on the diagonal for blocks

(3) 11" x wof strips, crosscut into:

(49) 2" x 11" rectangles for sashing

(2) 2" squares for cornerstone (right top and bottom left corners)

Red Grid Dot 7533/88

(28) 2" squares for cornerstones

Green Feedsack 7531/66

(6) 2" x wof strips, piece together end to end and cut:

(2) 2" x 62" strips for side inner borders

(2) 2" x 53" strips for top and bottom inner borders

The instructions are for the Pink/Red version of the quilt. The instructions are the same for the blue/purple quilt with the exception that two more colors are added for flying geese blocks.

Make:

(20) blue petal & blue swirl dot

(10) blue petal & purple daisy

(10) blue petal & purple Feedsack

(10) blue petal & blue focus print

(10) blue petal & purple grid dot. This will make two different versions of the block which may be alternated in the rows.

Purple/Blue Quilt

7530/55 Purple Focus Fabric	1 1/2 yards (outer border)
7530/77 Blue Focus Fabric	1 fat quarter (blocks)
7531/55 Purple Feedsack	1 fat quarter (blocks)
7531/66 Green Feedsack	5/8 yd (inner border)
7532/55 Purple Daisy	1 fat quarter (blocks)
7532/77 Blue Daisy	7/8 yd (blocks)
7533/77 Blue Grid Dot	1 fat quarter (cornerstones)
7533/55 Purple Grid Dot	1 fat quarter (blocks)
7534/11 Blue Petal	1 1/3 yd (blocks)
7534/55 Lavender Petal	2/3 yd (binding)
7535/11 Blue Swirl Dot	1/2 yd (blocks)
7535/66 Green Swirl Dot	2 yards (background)
Backing	4 yared

Cutting Requirements Purple/Blue Quilt

Blue Petal 7534/11

(11) 3 1/2" x wof strips, crosscut into:

(120) 3 1/2" squares for flying geese

Purple Feedsack 7531/55

(10) 3 1/2" x 6 1/2" rectangles for flying geese

Blue Swirl Dot 7535/11

(2) 6 1/2" x wof strips, crosscut into:

(20) 3 1/2" x 6 1/2" rectangles for flying geese

Blue Focus Fabric 7530/77

(10) 3 1/2" x 6 1/2" rectangles for flying geese

Blue Daisy 7532/77

(3) 5 1/2" x wof strips, crosscut into:

(20) 5 1/2" squares, cut once on the diagonal for blocks

Purple Daisy 7532/55

(10) 3 1/2" x 6 1/2" rectangles for flying geese

Purple Grid Dot 7533/55

(10) 3 1/2" x 6 1/2" rectangles for flying geese

Green Swirl Dot 7535/66

(4) 7 1/2" x wof strips, crosscut into:

(20) 7 1/2" squares, cut once on the diagonal for blocks

(3) 11" x wof strips, crosscut into:

(49) 2" x 11" rectangles for sashing

(2) 2" squares for cornerstones (right top and bottom left corners)

Blue Grid Dot 7533/77

(28) 2" squares for cornerstones

Green Feedsack 7531/66

(6) 2" x wof strips, piece together end to end and cut:

(2) 2" x 62" strips for side inner borders

(2) 2" x 53" strips for top and bottom inner borders

Purple Focus Fabric 7530/55

(7) 6" x wof strips, piece together end to end and cut:

(2) 6" x 65" strips for side outer borders

(2) 6" x 64" strips for top and bottom outer borders

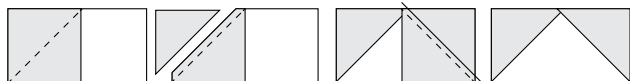
Lavender Petal 7534/55

(8) 2 1/2" x wof strips, pieced together end to end for binding

Flying Geese Blocks - 10 ½" finished size

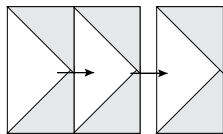
Draw a line from corner to corner on the wrong side of two 3 ½" pink petal squares. With right sides together, place one square on the end of a 3 ½" x 6 ½" red feedsack rectangle. Stitch on the line. Trim corner 1/4" from seam. Press. Place the remaining 3 ½" square on the other end of the red feedsack rectangle. Stitch and trim.

- This is one flying geese unit. Make 20.



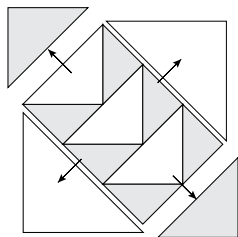
- Make another (20) flying geese units with (40) 3 ½" pink petal squares and (20) 3 ½" x 6 ½" red focus fabric rectangles.
 - Make another (20) flying geese units with (40) 3 ½" pink petal squares and (20) 3 ½" x 6 ½" red swirl dot rectangles.
- You will have 60 flying geese units total.

Take one flying geese unit from each of the three fabric combinations. Sew together as shown:



Red feedsack to red focus print to red swirl dot.

Add a 7 ½" green swirl dot triangle to each side. Sew a 5 ½" red daisy triangle to each end. Trim the block to 11" square.

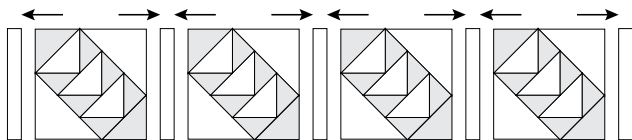


Make 20 blocks

Assembly

Arrange blocks in five rows of four blocks each. Alternate 2" x 11" green dot sashing strips with the blocks.

Press toward the sashing strips.



Sashing Rows

Alternate four 2" x 11" green dot strips and five 2" red grid dot cornerstones.

(To achieve the "diagonal" look of the quilt, the top sashing row ends with a green dot cornerstone and the bottom sashing row begins with a green dot cornerstone.)



Top sashing row ends with a green dot cornerstone



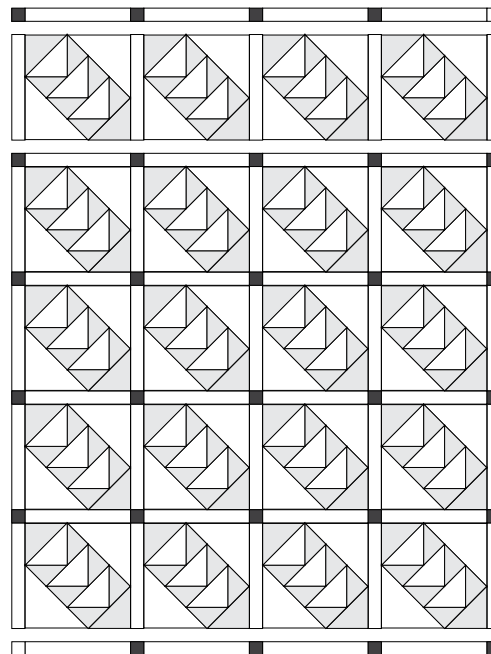
Bottom sashing row begins with a green dot cornerstone



Make four sashing rows alternating four sashing strips and five 2" red grid dot cornerstones.

Make a total of six sashing rows.

Sew sashing rows and block rows together to complete the quilt top.



Borders

Press toward the borders.

Inner border Green feedsack

Add 2" x 62" side border strips

Add 2" x 53" top and bottom border strips.

Outer Border Red focus fabric

Add 6" x 65" side border strips

Add 6" x 64" top and bottom border strips.

Layer, quilt and bind!

Fresh Cut Quilts

<http://www.freshcutquilts.com/>

<http://www.freshcutquilts.blogspot.com/>