

Elizabeth's Letters

Free Project Sheet



Quilt and Fabrics Designed by Jill Finley

Finished Quilt Size: 63" x 63"



Henry Glass & Co.

49 West 37th Street
New York, NY 10018
tel: 212-686-5194

fax: 212-532-3525

New York: 800-294-9495

www.henryglassfabrics.com

Elizabeth's Letters

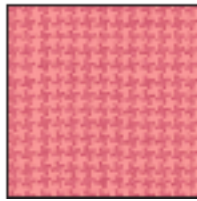
Finished Quilt Size: 63" x 63"

Finished Block Size: 8" x 8"

Materials for the Quilt Project



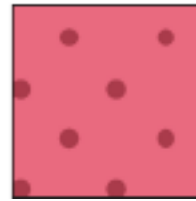
5258-99
Black Floral
1 3/4 yards



5260-22
Pink Houndstooth
1/2 yard



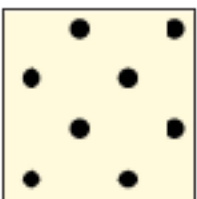
5264-22
Pink Script
1/2 yard



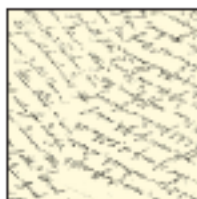
5263-22
Pink Dot
1/2 yard



5259-22
Pink Floral
1/2 yard



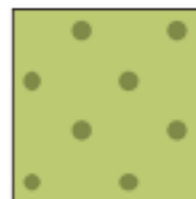
5263-9
Black Dot
1/2 yard



5264-9
Cream Script
1/2 yard



5259-66
Green Floral
1/2 yard



5263-66
Green Dot
1/2 yard



5260-9
Cream
Houndstooth
1/2 yard



5261-96
Floral Mosaic
1/2 yard



5262-2
Pink Stripe
5/8 yard

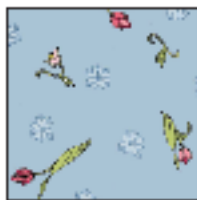


5258-44
Cream Floral
4 1/4 yards for quilt backing

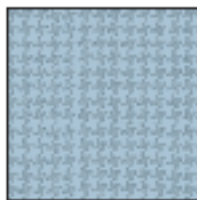
You Will Also Need:

- 4 3/4 yards of 1/4" wide black quick bias **OR** 1/4 yard of solid black, Henry Glass #N-830A Black.
- All supplies for your preferred appliqué method.

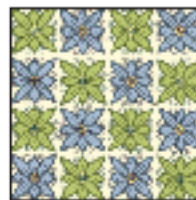
Other Fabrics in the Collection



5259-11
Blue Floral



5260-11
Blue Houndstooth



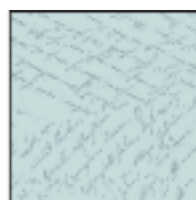
5261-41
Cream Floral Mosaic



5261-62
Pink Floral Mosaic



5262-6
Green Stripe



5264-11
Blue Script

Cutting Instructions

Please note: all strips are cut across the width of the fabric from selvage edge to selvage edge.

From the black floral, cut:

- (2) 8 $\frac{7}{8}$ " strips. Recut into (6) 8 $\frac{7}{8}$ " x 8 $\frac{7}{8}$ " squares.
- (6) 6 $\frac{1}{2}$ " strips for the outer border.

From the pink houndstooth, cut:

- (5) 2" strips for the inner border.
- (16) Template A (flower centers).

From EACH of the pink script and pink dot, cut:

- (1) 8 $\frac{7}{8}$ " strip. Recut into (4) 8 $\frac{7}{8}$ " x 8 $\frac{7}{8}$ " squares.

From the pink floral, cut:

- (1) 8 $\frac{7}{8}$ " strip. Recut into (2) 8 $\frac{7}{8}$ " x 8 $\frac{7}{8}$ " squares.

From EACH of the cream dot and cream script, cut:

- (2) 3 $\frac{1}{2}$ " strips. Recut into (8) 3 $\frac{1}{2}$ " x 8 $\frac{1}{2}$ " pieces and (8) 3 $\frac{1}{2}$ " x 3 $\frac{1}{2}$ " squares.
- (1) 2 $\frac{1}{2}$ " strip. Recut into (8) 2 $\frac{1}{2}$ " x 3 $\frac{1}{2}$ " pieces.

From the green floral, cut:

- (3) 3 $\frac{1}{2}$ " strips. Recut into (10) 3 $\frac{1}{2}$ " x 8 $\frac{1}{2}$ " pieces and (10) 3 $\frac{1}{2}$ " x 3 $\frac{1}{2}$ " squares.
- (1) 2 $\frac{1}{2}$ " strip. Recut into (10) 2 $\frac{1}{2}$ " x 3 $\frac{1}{2}$ " pieces.
- (16) Template B (leaves).

From the green dot, cut:

- (3) 3 $\frac{1}{2}$ " strips. Recut into (10) 3 $\frac{1}{2}$ " x 8 $\frac{1}{2}$ " pieces and (10) 3 $\frac{1}{2}$ " x 3 $\frac{1}{2}$ " squares.
- (1) 2 $\frac{1}{2}$ " strip. Recut into (10) 2 $\frac{1}{2}$ " x 3 $\frac{1}{2}$ " pieces.

From the cream houndstooth, cut:

- (2) 3 $\frac{1}{2}$ " strips. Recut into (4) 3 $\frac{1}{2}$ " x 8 $\frac{1}{2}$ " pieces, (4) 3 $\frac{1}{2}$ " x 3 $\frac{1}{2}$ " squares and (4) 3 $\frac{1}{2}$ " x 2 $\frac{1}{2}$ " pieces.
- (48) Template C (flower petals).

From the floral mosaic, cut:

- (20) 2 $\frac{1}{2}$ " x 2 $\frac{1}{2}$ " squares, fussy cut so that (4) floral motifs are centered in each square.

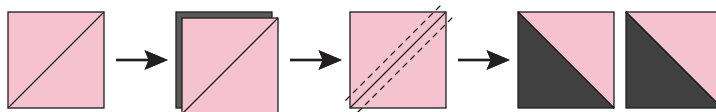
From the pink stripe, cut:

- (7) 2 $\frac{1}{4}$ " strips for the binding.

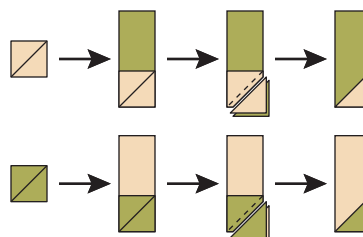
Sewing Instructions

All seams are sewn using 1/4" seam allowance with pieces held right sides together and raw edges even.

1. Draw a diagonal line on the wrong side of an 8 $\frac{7}{8}$ " pink script square. Right sides together, layer the marked square with an 8 $\frac{7}{8}$ " black floral square. Sew 1/4" away on each side of the drawn line. Cut along the drawn line to make two pieced squares as shown. Repeat once to make a total of (4) pink script and black floral pieced squares.

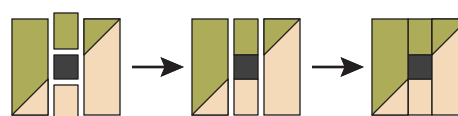


2. Repeat the procedure from step 1 to make a total of:
 - (4) pink script and pink floral pieced squares
 - (8) pink dot and black floral pieced squares.
3. Draw a diagonal line on the wrong side of (1) 3 $\frac{1}{2}$ " cream dot square. Right sides together, layer the marked cream square on top of a 3 $\frac{1}{2}$ " x 8 $\frac{1}{2}$ " green dot piece, oriented as shown. Sew on the drawn line and trim the seam allowance to 1/4". Press the cream triangle to make the unit shown. Repeat this procedure using (1) 3 $\frac{1}{2}$ " green dot square and (1) 3 $\frac{1}{2}$ " x 8 $\frac{1}{2}$ " cream dot piece.



4. Sew 2 $\frac{1}{2}$ " x 3 $\frac{1}{2}$ " cream dot and green dot pieces to opposite sides of a 2 $\frac{1}{2}$ " floral mosaic square. Stitch the units from step 3 to each long side of the floral mosaic unit to complete (1) Floral Mosaic Block.
5. Repeat the procedures from steps 3 and 4 to make the Floral Mosaic Blocks listed:

- (4) cream dot and green dot blocks
- (4) cream dot and green floral blocks
- (4) cream script and green dot blocks
- (4) cream script and green floral blocks
- (2) cream houndstooth and green dot blocks
- (2) cream houndstooth and green floral blocks



Quilt Assembly

1. Using the quilt pictured on the cover as a guide, arrange the (16) pieced squares and (20) Floral Mosaic blocks into (6) rows with (6) units in each row. Place and rotate the individual units as necessary to replicate the design shown in the model. Stitch the units into rows and stitch the rows together to complete the body of the quilt top.
2. Prepare the appliqué pieces for your preferred appliqué method. If using fabric to make the black bias stems, cut (16) 12" long bias strips whatever width needed to yield 3/8" bias stems using your favorite method. Using the quilt pictured as a guide, appliqué the stems, flower centers, flower petals, and leaves to the quilt top.



3. Trim the selvages from the 2" pink houndstooth strips and sew the strips together end to end to make a long 2" strip. From this long strip, cut (2) 48 1/2" and (2) 51 1/2" lengths. Stitch the shorter lengths to the right and left sides of the quilt top. Sew the longer lengths to the top and bottom of the quilt top.
4. Trim the selvages from the 6 1/2" black floral strips and sew the strips together end to end to make a long 6 1/2" strip. From this long strip, cut (2) 51 1/2" and (2) 63 1/2" lengths. Stitch the shorter pieces to the right and left sides of the quilt top. Sew the longer pieces to the top and bottom.
5. Layer the completed quilt top with batting and backing and quilt as desired. Trim the finished quilt and bind using the 2 1/4" pink stripe strips.

Make sure to select the "do not scale" option when printing templates.

*Template C
Cut 48
from
Cream
Houndstooth*

*Template A
Cut 16
from
Pink
Houndstooth*

*Template B
Cut 16
from
Green Floral*



Scaling reference. This box should measure 1" high and 1" wide.