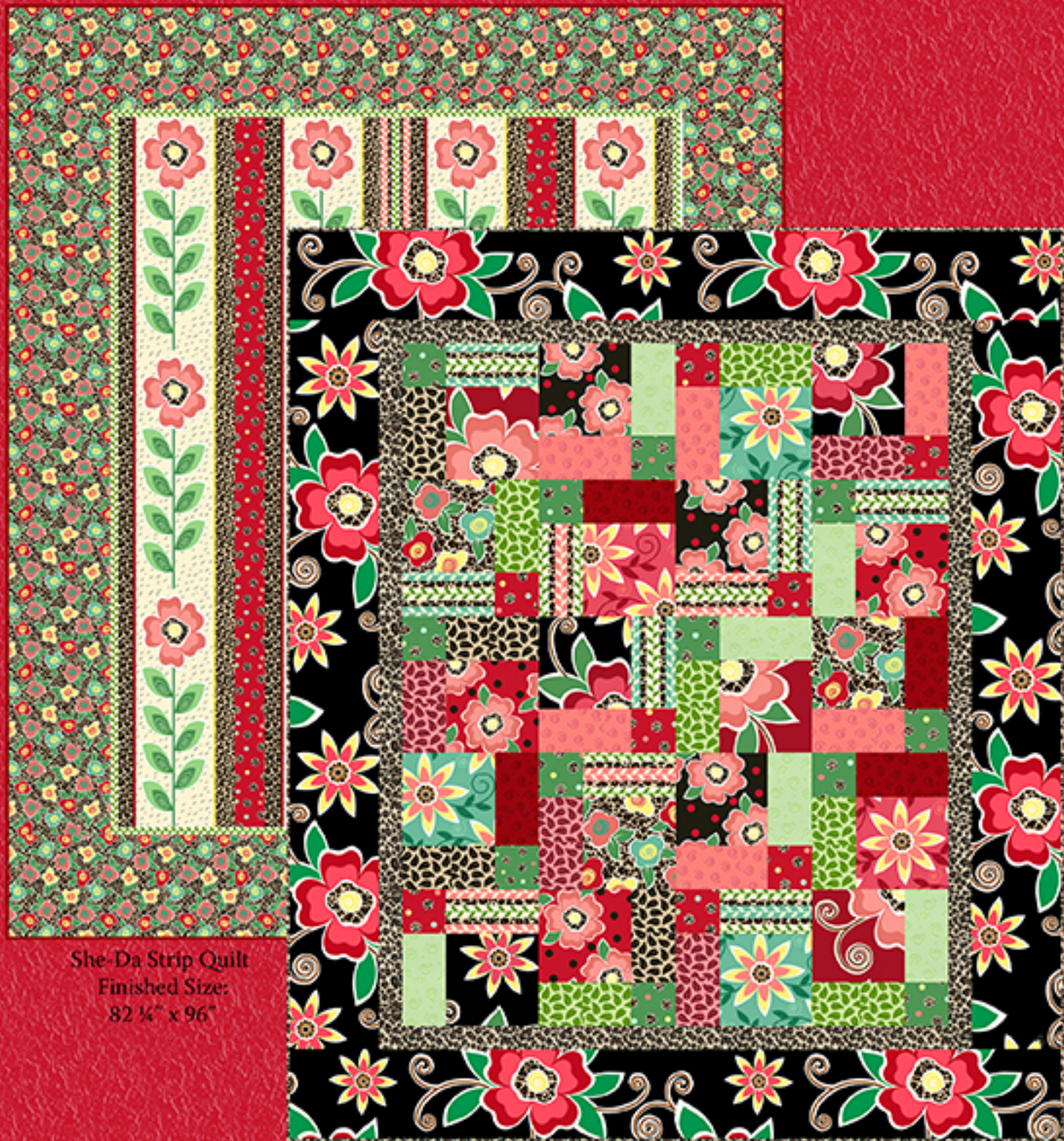


# She-Da

*Fabrics and Quilts Designed by  
Dana Brooks of Lazy Daisy Cottage*



She-Da Strip Quilt  
Finished Size:  
82 1/4" x 96"

She-Da Pieced Quilt Finished Size: 78" x 92"

*A Free Pattern Sheet From*



**Henry Glass & Co.**

49 West 37th Street, New York, NY 10018  
tel: 212-686-5194 fax: 212-532-3525  
New York: 800-294-9495  
[www.henryglassfabrics.com](http://www.henryglassfabrics.com)

# *She-Da Fabric Collection*



9214-88  
Large Red Floral



9214-98  
Large Black Floral



9215-88  
Pink Flowers  
on Red



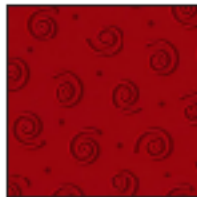
9215-98  
Pink Flowers  
on Black



9216-33  
Peach Swirl  
Print



9216-66  
Green Swirl  
Print



9216-88  
Red Swirl  
Print



9217-33  
Multicolor  
Floral Print



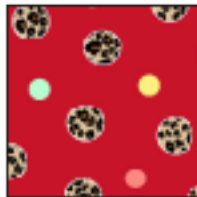
9218-33  
Peach Stripe



9218-66  
Green Stripe



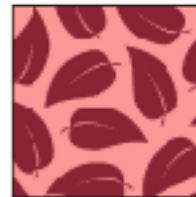
9219-66  
Green Cheetah  
Dot



9219-88  
Red Cheetah  
Dot



9220-66  
Green Leaf  
Print



9220-88  
Red Leaf  
Print



9220-99  
Black Leaf  
Print



9221-33  
Cheetah Print



9222-33  
Peach Daisy  
Print



9222-66  
Green Daisy  
Print



9223-33  
Large Floral  
Stripe

# She-Da Pieced Quilt

Finished Quilt Size: 78" x 92"  
Finished Block Size: 14" x 14"

## Materials

2 5/8 yards	Large Black Floral	(9214-98)
1 1/8 yards	Cheetah Print	(9221-33)
	(includes binding)	
3/8 yard EACH of (16) coordinating prints:		
	Large Red Floral	(9214-88)
	Pink Flowers on Red	(9215-88)
	Pink Flowers on Black	(9215-98)
	Peach Swirl	(9216-33)
	Green Swirl	(9216-66)
	Red Swirl	(9216-88)
	Multicolor Floral	(9217-33)
	Peach Stripe	(9218-33)
	Green Stripe	(9218-66)
	Green Cheetah Dot	(9219-66)
	Red Cheetah Dot	(9219-88)
	Green Leaf Print	(9220-66)
	Red Leaf Print	(9220-88)
	Black Leaf Print	(9220-99)
	Peach Daisy Print	(9222-33)
	Green Daisy Print	(9222-66)
5 3/4 yards	Large Floral Stripe	(9223-33)
	(for quilt backing)	

## Cutting Instructions

*Please note: unless otherwise noted all strips are cut across the width of the fabric from selvage edge to selvage edge.*

### From the large black floral, cut:

(9) 10" strips. Set aside (8) strips for the outer border.

Recut (1) strip into (4) 10" x 10" squares.

### From the cheetah print, cut:

(9) 2 1/4" strips for the binding.

(7) 2" strips for the inner border.

### From EACH of the remaining (16) fabrics cut:

(1) 10" strip. Recut into (4) 10" x 10" squares.

## Sewing Instructions

*All seams are sewn using 1/4" seam allowance with pieces held right sides together and raw edges even.*

- Referring to the Fabric Placement Diagrams in the next column, arrange (45) of the 10" squares to make (5) nine-patch sets as shown.
- Referring to the diagrams at the bottom of the next column, arrange the squares for (1) block into (3) rows with (3) squares in each block. Stitch the squares together into rows. Stitch the rows together to make the nine-patch. Repeat to make a total of (5) nine-patch blocks. Referring to the cutting diagram, cut (1) block in half in both directions to yield (4) four-patch blocks as shown. Each four-patch block should measure 14 1/2" from raw edge to raw edge in both directions. Repeat to make a total of (20) 14 1/2" four-patch blocks.

## Fabric Placement Diagrams

Pink Flowers on Black	Green Swirl	Large Red Floral
Peach Swirl	Green Cheetah Dot	Green Leaf Print
Multicolor Floral	Red Swirl	Pink Daisy Print

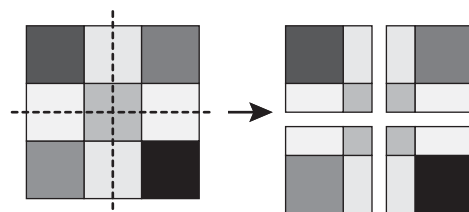
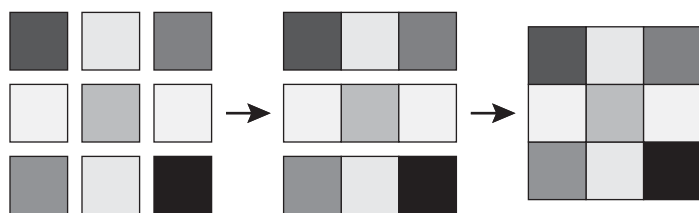
Pink Flowers on Red	Red Leaf Print	Multicolor Floral
Black Leaf Print	Green Cheetah Dot	Peach Stripe
Teal Daisy Print	Red Swirl	Pink Daisy Print

Large Red Floral	Teal Stripe	Pink Flowers on Red
Black Leaf Print	Green Cheetah Dot	Green Leaf Print
Pink Flowers on Red	Green Leaf Print	Large Red Floral

Teal Daisy Print	Peach Swirl	Large Black Floral
Green Leaf Print	Red Cheetah Dot	Red Leaf Print
Multicolor Floral	Teal Stripe	Teal Daisy Print

Pink Flowers on Black	Green Swirl	Large Black Floral
Peach Swirl	Red Cheetah Dot	Peach Stripe
Large Black Floral	Teal Stripe	Pink Flowers on Black

## Block Assembly and Cutting Diagrams



## Quilt Assembly

Please refer to the bottom of the right-hand column on the next page for the quilt assembly instructions.

# She-Da Strip Quilt

Finished Quilt Size:  
82 1/4" x 96"

## Materials

2 1/2 yards	Multicolor Floral	(9217-33)
2 3/4 yards	Large Floral Stripe	(9223-33)
2 1/8 yards	Peach Stripe	(9218-33)
2 1/8 yards	Red Cheetah Dot	(9219-88)
3/4 yard	Red Swirl	(9216-88)
7 3/4 yards	Large Red Floral	(9214-88)
	(for quilt backing)	

## Cutting Instructions

*Please note: all strips are cut LENGTHWISE, parallel to the selvage edges EXCEPT for the red swirl binding strips which are cut across the width of the fabric from selvage edge to selvage edge.*

### From the multicolor floral, cut:

- (4) strips 10 1/2" wide x length of fabric for the outer border.

### From the large floral stripe, cut:

- (4) strips 12 1/2" wide x length of fabric, with a floral motif stripe centered in each strip.

### From the peach stripe, cut:

- (1) strip 4 1/4" wide x length of fabric with a green leaf motif stripe centered in the strip.
- (4) strips 1 3/4" wide x length of fabric with a green leaf motif stripe centered in each strip.

### From the red cheetah dot, cut:

- (2) strips 4 1/2" wide x length of fabric.

### From the red swirl print, cut:

- (9) strips 2 1/4" wide x **width** of fabric for the binding.

## Sewing Instructions

*All seams are sewn using 1/4" seam allowance with pieces held right sides together and raw edges even.*

1. Locate the point on each large floral stripe strip where a floral motif is centered north to south with a complete floral motif both above and below the center motif. Mark these points and use these as the center points for these strips while constructing the quilt. Referring to the quilt pictured on the cover, match the center points and stitch together from left to right: a 1 3/4" peach stripe strip, a large floral strip, a red cheetah dot strip, a large floral strip, the 4 1/4" peach stripe strip, a large floral strip, a red cheetah dot strip, a large floral strip, and a 1 3/4" peach stripe strip. Trim the unit so that three large floral motifs are centered north to south, adding 1/4" seam allowance at the top and bottom. Stay stitch across the top and bottom of the quilt to prevent stretching.
2. Measure the quilt widthwise and trim (2) 1 3/4" peach stripe strips to that length. Stitch these pieces to the top and bottom of the quilt top.
3. Measure the quilt lengthwise, including the strips just added, and trim (2) multicolor floral strips to that length. Stitch these pieces to the right and left sides of the quilt top.

## Sewing Instructions for She-Da Strip Quilt (cont.)

4. Measure the quilt widthwise, including the strips just added, and trim (2) multicolor floral strips to that length. Stitch these strips to the top and bottom to complete the quilt top.
5. Layer the finished quilt top with batting and backing and quilt as desired. Bind the completed quilt with the 2 1/4" red swirl strips.



## Sewing Instructions for She-Da Pieced Quilt (cont from page 1.) Quilt Assembly

1. Arrange the (20) four-patch blocks into (5) rows with (4) blocks in each row. Rotate alternate blocks 180 degrees as shown in the quilt pictured on the cover. Stitch the blocks into rows and sew the rows together to complete the quilt center.
2. Trim the selvages and sew the (7) 2" cheetah print strips together end to end to make a long 2" strip. From this long strip, cut (2) 70 1/2" and (2) 59 1/2" lengths (*if your measurements are different, cut to fit your quilt top*). Stitch the longer pieces to the right and left sides of the quilt top. Sew the shorter pieces to the top and the bottom.
3. Trim the selvages and sew the (8) 10" large black floral print strips together end to end to make a long 10" strip. From this long strip, cut (2) 73 1/2" and (2) 78 1/2" lengths (*if your measurements are different, cut to fit your quilt top*). Stitch the **shorter** pieces to the right and left sides of the quilt top. Sew the **longer** pieces to the top and the bottom.
4. Layer the finished quilt top with batting and backing and quilt as desired.
5. Trim the finished quilt and bind using the 2 1/4" cheetah print strips.