

# Woodland Friends

A Free Pattern Sheet  
Featuring  
Fabrics Designed by  
Debi Hron



Pink Version



Blue Version

Finished Quilt Size:  
54 1/2" x 61 1/2"

 **Henry Glass & Co., Inc**

49 West 37th Street, New York, NY 10018  
tel: 212-686-5194 fax: 212-532-3525  
Toll Free: 800-294-9495  
[www.henryglassfabrics.com](http://www.henryglassfabrics.com)

facebook



# Woodland Friends

Finished Quilt Size: 54 ½" x 61 ½"

## Fabrics in the Collection



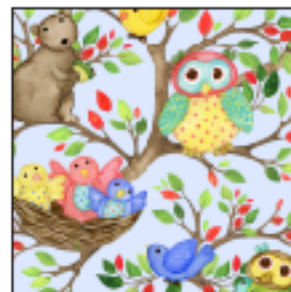
5703-11  
Printed Panel



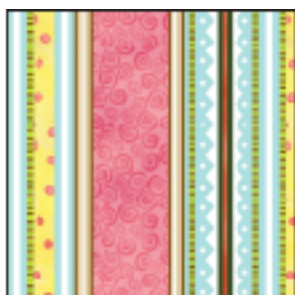
5704-11  
Printed Squares



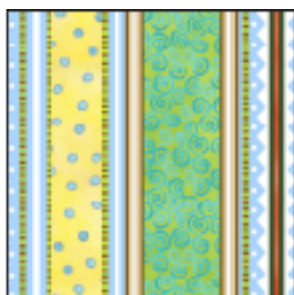
5705-2  
White Forest Print



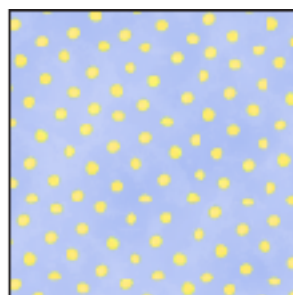
5705-11  
Blue Forest Print



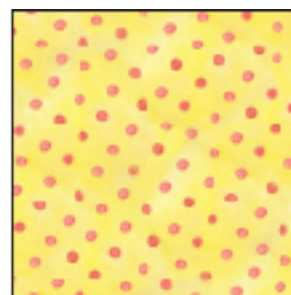
5706-21  
Pink Stripe



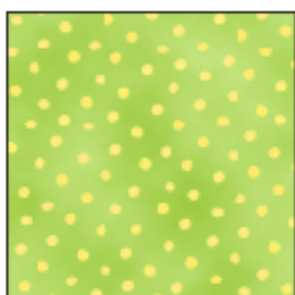
5706-64  
Blue Stripe



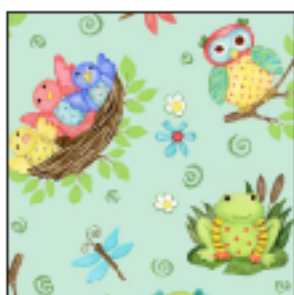
5707-14  
Blue Dot



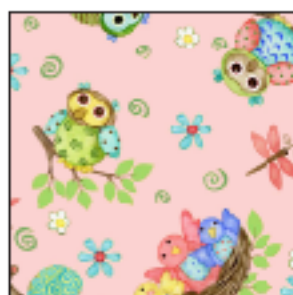
5707-42  
Yellow Dot



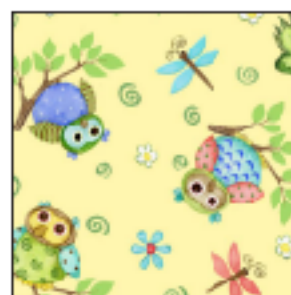
5707-64  
Green Dot



5708-11  
Mint Animal Print



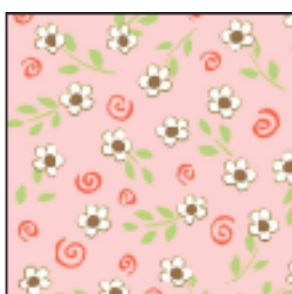
5708-22  
Pink Animal Print



5708-44  
Yellow Animal Print



5709-11  
Mint Floral



5709-22  
Pink Floral



5709-44  
Yellow Floral

# Woodland Friends

# Pink Version

## Materials

<b>5703-11</b>	Printed Panel <i>(1 piece 35 1/2" x width of fabric with the printed panel centered in the cut yardage)</i>	1 yard
<b>5704-11</b>	Printed Squares <i>(enough for (14) 5 3/4" squares with an animal character centered in each square)</i>	3/4 yard
<b>5706-21</b>	Pink Stripe	5/8 yard
<b>5707-42</b>	Yellow Dot <i>(includes binding)</i>	1/2 yard
<b>5708-22</b>	Pink Animal Print	3/4 yard
<b>5709-11</b>	Mint Floral	5/8 yard
<b>5705-2</b>	White Forest Print <i>(for quilt backing)</i>	4 1/8 yards

## Cutting Instructions

Please note: all strips are cut across the width of the fabric from selvage edge to selvage edge.

### From the printed panel, cut:

- (1) 35 1/2" wide x 42 1/2" long piece with the printed panel motif centered both vertically and horizontally.

### From the printed squares, cut:

- (14) 5 3/4" squares with a printed animal motif centered in each cut square.

### From the pink stripe, cut:

- (6) 3" strips for the outer border.

### From the yellow dot, cut:

- (6) 2 1/4" strips for the binding.

### From the pink animal print, cut:

- (3) 6 3/4" strips. Recut (1) strip into (4) 6 3/4" x 7" pieces. Recut (1) strip into (4) 6 3/4" x 5 5/8" pieces. Recut (1) strip into (4) 6 3/4" x 5 1/2" and (2) 6 3/4" x 8" pieces.

### From the mint floral, cut:

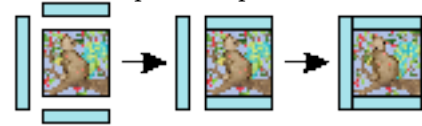
- (12) 1 1/2" strips. Set aside (5) strips for the inner border. Recut (3) strips into (14) 1 1/2" x 7 3/4" pieces. Recut (4) strips into (28) 1 1/2" x 5 3/4" pieces.

## Sewing Instructions

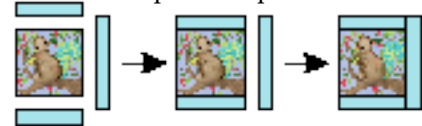
All seams are sewn using 1/4" seam allowance with pieces held right sides together and raw edges even.

1. Trim the selvages from the (5) 1 1/2" mint floral strips set aside for the inner border. Sew the strips together end to end to make a long 1 1/2" strip. Cut this long strip into (2) 50" and (2) 42 1/2" lengths. Stitch the 42 1/2" lengths to the left and right sides of the trimmed printed panel.

2. Stitch 1 1/2" x 5 3/4" mint floral strips to the top and bottom of a 5 3/4" printed square noting orientation of the printed motif. Sew a 1 1/2" x 7 3/4" mint floral strip to the left side of the square. Repeat to make a total of (3) printed square units.



3. Referring to the quilt pictured on the cover, stitch 5 1/2" x 6 3/4" pink animal print pieces to the top and bottom of a printed square unit from step 2.
4. Stitch the remaining printed square units from step 2 to the top and bottom of the unit from step 3, noting orientation of the motifs in the printed squares. Sew 5 5/8" x 6 3/4" pink animal print pieces to the top and bottom to complete the pieced border. Stitch this border to the left side of the quilt top.
5. Stitch 1 1/2" x 5 3/4" mint floral strips to the top and bottom of a 5 3/4" printed square noting orientation of the printed motif. Sew a 1 1/2" x 7 3/4" mint floral strip to the right side of the square. Repeat to make a total of (3) printed square units.



6. Repeat steps 3 and 4 to add the pieced border to the right side of the quilt top making sure to keep the printed motifs in the squares oriented correctly.
7. Sew the 1 1/2" x 50" mint floral strips cut in step 1 to the top and bottom of the center panel.
8. Stitch 1 1/2" x 5 3/4" mint floral strips to the left and right sides of a 5 3/4" printed square noting orientation of the printed motif. Sew a 1 1/2" x 7 3/4" mint floral piece to the top of the square. Repeat to make a total of (4) printed square units.



9. Noting orientation, sew (2) square units from step 8 to the short sides of a 6 3/4" x 8" pink animal print piece. Sew 6 3/4" x 7" pink animal print pieces to each end of the border unit. Again noting orientation of the printed motifs, stitch square units from step 8 to each end to complete the pieced border. Sew this unit to the top of the quilt top.
10. Stitch 1 1/2" x 5 3/4" mint floral strips to the left and right side of a 5 3/4" printed square noting orientation of the printed motif. Sew a 1 1/2" x 7 3/4" mint floral piece to the bottom of the square. Repeat to make a total of (4) printed square units.



11. Using the printed square units from step 10, repeat the procedure from step 9 to make the pieced bottom border. Sew this border to the bottom of the quilt top.
12. Trim the selvages from the 3" pink stripe pieces and sew the strips together end to end to make a long 3" strip. Cut this strip into (2) 57" and (2) 55" lengths (if your measurements are different, cut to fit your quilt top). Sew the longer pieces to the left and right sides of the quilt top. Sew the shorter pieces to the top and bottom.
13. Layer the quilt top with batting and backing and quilt as desired.
14. Bind the finished quilt using the 2 1/4" yellow dot strips.

# Woodland Friends

# Blue Version

## Materials

<b>5703-11</b>	Printed Panel <i>(1 piece 35 1/2" x width of fabric with the printed panel centered in the cut yardage)</i>	1 yard
<b>5704-11</b>	Printed Squares <i>(enough for (14) 5 3/4" squares with an animal character centered in each square)</i>	3/4 yard
<b>5706-64</b>	Blue Stripe	5/8 yard
<b>5707-64</b>	Green Dot <i>(includes binding)</i>	1/2 yard
<b>5708-44</b>	Yellow Animal Print	3/4 yard
<b>5707-14</b>	Blue Dot	5/8 yard
<b>5705-11</b>	Blue Forest Print <i>(for quilt backing)</i>	4 1/8 yards

## Cutting Instructions

Please note: all strips are cut across the width of the fabric from selvage edge to selvage edge.

### From the printed panel, cut:

- (1) 35 1/2" wide x 42 1/2" long piece with the printed panel motif centered both vertically and horizontally.

### From the printed squares, cut:

- (14) 5 3/4" squares with a printed animal motif centered in each cut square.

### From the blue stripe, cut:

- (6) 3" strips for the outer border.

### From the green dot, cut:

- (6) 2 1/4" strips for the binding.

### From the yellow animal print, cut:

- (3) 6 3/4" strips. Recut (1) strip into (4) 6 3/4" x 7" pieces. Recut (1) strip into (4) 6 3/4" x 5 5/8" pieces. Recut (1) strip into (4) 6 3/4" x 5 1/2" and (2) 6 3/4" x 8" pieces.

### From the blue dot, cut:

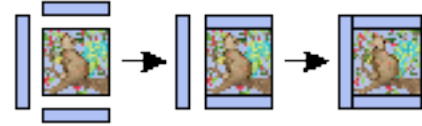
- (12) 1 1/2" strips. Set aside (5) strips for the inner border. Recut (3) strips into (14) 1 1/2" x 7 3/4" pieces. Recut (4) strips into (28) 1 1/2" x 5 3/4" pieces.

## Sewing Instructions

All seams are sewn using 1/4" seam allowance with pieces held right sides together and raw edges even.

1. Trim the selvages from the (5) 1 1/2" blue dot strips set aside for the inner border. Sew the strips together end to end to make a long 1 1/2" strip. Cut this long strip into (2) 50" and (2) 42 1/2" lengths. Stitch the 42 1/2" lengths to the left and right sides of the trimmed printed panel.

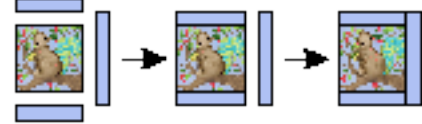
2. Stitch 1 1/2" x 5 3/4" blue dot strips to the top and bottom of a 5 3/4" printed square noting orientation of the printed motif. Sew a 1 1/2" x 7 3/4" blue dot strip to the left side of the square. Repeat to make a total of (3) printed square units.



3. Referring to the quilt pictured on the cover, stitch 5 1/2" x 6 3/4" yellow animal print pieces to the top and bottom of a printed square unit from step 2.

4. Stitch the remaining printed square units from step 2 to the top and bottom of the unit from step 3, noting orientation of the motifs in the printed squares. Sew 5 5/8" x 6 3/4" yellow animal print pieces to the top and bottom to complete the pieced border. Stitch this border to the left side of the quilt top.

5. Stitch 1 1/2" x 5 3/4" blue dot strips to the top and bottom of a 5 3/4" printed square noting orientation of the printed motif. Sew a 1 1/2" x 7 3/4" blue dot strip to the right side of the square. Repeat to make a total of (3) printed square units.



6. Repeat steps 3 and 4 to add the pieced border to the right side of the quilt top making sure to keep the printed motifs in the squares oriented correctly.

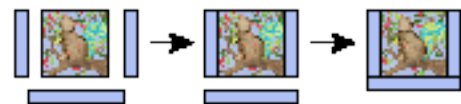
7. Sew the 1 1/2" x 50" blue dot strips cut in step 1 to the top and bottom of the center panel.

8. Stitch 1 1/2" x 5 3/4" blue dot strips to the left and right sides of a 5 3/4" printed square noting orientation of the printed motif. Sew a 1 1/2" x 7 3/4" blue dot piece to the top of the square. Repeat to make a total of (4) printed square units.



9. Noting orientation, sew (2) square units from step 8 to the short sides of a 6 3/4" x 8" yellow animal print piece. Sew 6 3/4" x 7" yellow animal print pieces to each end of the border unit. Again noting orientation of the printed motifs, stitch square units from step 8 to each end to complete the pieced border. Sew this unit to the top of the quilt top.

10. Stitch 1 1/2" x 5 3/4" blue dot strips to the left and right sides of a 5 3/4" printed square noting orientation of the printed motif. Sew a 1 1/2" x 7 3/4" blue dot piece to the bottom of the square. Repeat to make a total of (4) printed square units.



11. Using the printed square units from step 10, repeat the procedure from step 9 to make the pieced bottom border. Sew this border to the bottom of the quilt top.

12. Trim the selvages from the 3" blue stripe pieces and sew the strips together end to end to make a long 3" strip. Cut this strip into (2) 57" and (2) 55" lengths (if your measurements are different, cut to fit your quilt top). Sew the longer pieces to the left and right sides of the quilt top. Sew the shorter pieces to the top and bottom.

13. Layer the quilt top with batting and backing and quilt as desired.

14. Bind the finished quilt using the 2 1/4" green dot strips.